



# PLANTPROBES

www.plantprobes.net

Email: antibodies@plantprobes.net

## LM15 xyloglucan

Quality Control Certificate of Analysis

Catalogue No.: LM15-050

Unit Size: 50 µg/100 µL

Lot No: 1212-15

The LM15 rat monoclonal antibody is a high affinity antibody to xyloglucan of plant cell walls. LM15 recognises the XXXG heptasaccharide motif of xyloglucan in several species and can accommodate to some extent a single galactosyl substitution of the XXXG oligosaccharide. In some cases the LM15 epitope within cell walls may be masked by the presence of other polysaccharides such as pectin.

**Description:** Lyophilised Rat monoclonal protein-G affinity purified antibody specific for xyloglucan.

**Vial Constituents:** Lyophilised monoclonal antibody (50 µg) with stabilizer 20%.

**Immunogen:** Antibody generated using a neoglycoprotein incorporating the xylosylated heptasaccharide from tamarind xyloglucan (XXXG-BSA).

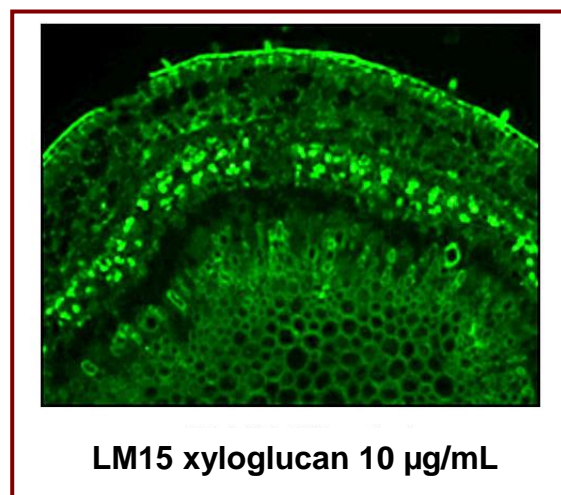
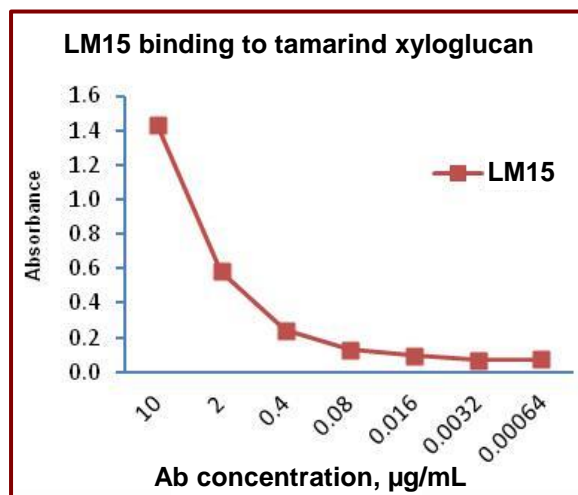
**Storage Instructions:** Lyophilised antibody is stable at 4°C when stored with desiccant. Reconstitute lyophilised powder in 100 µL of 18 MΩ H<sub>2</sub>O, aliquot and store frozen at -80°C for 1 year. Avoid freeze - thaw cycles.

**Antibody Isotype:** IgG

**Tested Applications:** ELISA and IF 10 µg/mL.

**Antibody Purity:** Protein G Affinity Purified

**Specificity:** Antibody recognises the XXXG motif of xyloglucan of plant cell walls. It can, to some extent, accommodate a single galactosyl substitution of XXXG.



**Left:** ELISA titration of LM15 binding to tamarind xyloglucan coated onto a microtitre plate at 50 µg/mL.

**Right:** IF micrograph of the binding of LM15 (10 µg/mL) to a section of tamarind stem.

**LM15 Reference:** Marcus *et al.* (2008) Pectic homogalacturonan masks abundant sets of xyloglucan epitopes in plant cell walls. **BMC Plant Biology** 8:60.