



# PLANTPROBES

www.plantprobes.net

Email: antibodies@plantprobes.net

## LM5 1,4-galactan

Quality Control Certificate of Analysis

Catalogue No.: LM5-050

Unit Size: 50 µg/100 µL

Lot No: 1212-05

The LM5 rat monoclonal antibody is a high affinity antibody to (1-4)-β-D-galactosyl residues found in the galactan components of certain pectic polymers. (1-4)-β-D-galactan is often associated with the pectic polymer rhamnogalacturonan-I. The LM5 galactan epitope is widely found in the cell walls of many plants and can also be present in isolated pectin preparations used for commercial purposes.

**Description:** Lyophilised Rat monoclonal protein-G affinity purified antibody specific for (1-4)-β-D-galactan

**Immunogen:** Antibody generated using a neoglycoprotein (galactotetraose-BSA).

**Antibody Isotype:** IgG

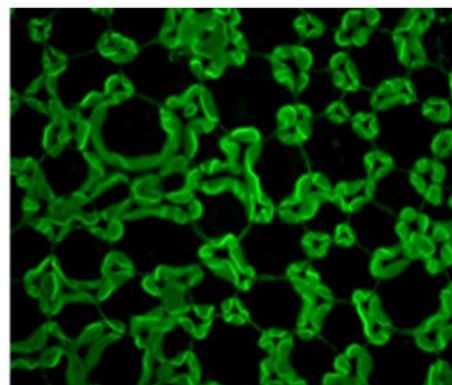
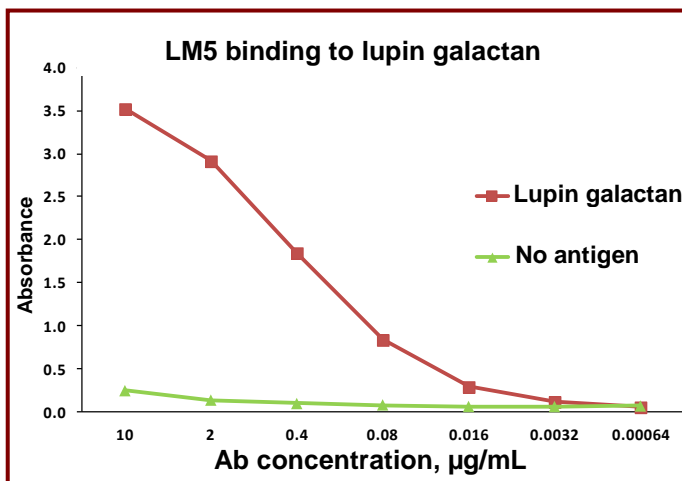
**Antibody Purity:** Protein G Affinity Purified

**Vial Constituents:** Lyophilised monoclonal antibody (50 µg) with stabilizer 20%

**Storage Instructions:** Lyophilised antibody is stable at 4°C when stored with desiccant. Reconstitute lyophilised powder in 100 µl of 18 MΩ H<sub>2</sub>O, aliquot and store frozen at -80°C for 1 year. Avoid freeze - thaw cycles.

**Tested Applications:** ELISA and IF 10 µg/ml.

**Specificity:** Antibody recognises a linear tetrasaccharide in (1-4)-β-D-galactan. Antibody does not cross react with (1-3)-β-D-galactan or (1-6)-β-D-galactan.



LM5 10 µg/mL

**Left:** ELISA showing titration of LM5 binding to lupin galactan coated onto a microtitre plate at 50 µg/mL.

**Right:** IF micrograph showing the binding of the LM5 (10 µg/mL) to a section across a lupin seed.

**LM5 Reference:** Jones et al. (1997) Localization of pectic galactan in tomato cell walls using a monoclonal antibody specific to (1-4)-β-D-Galactan. *Plant Physiology* 113:1405.